

*Computer Interface*

# COLOR ANALYZER

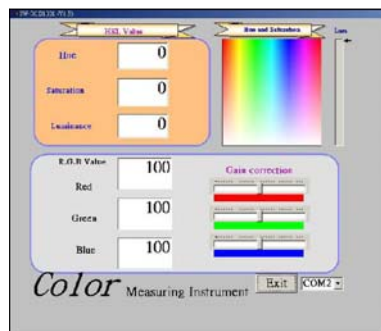
Model : RGB-1001

*ISO-9001, CE, IEC1010*



## FEATURES

- \* Portable color measuring instrument equipped with an external sensor probe having a 45° /0° color measuring geometry.
- \* The modern, accurate microprocessor technology uses the spectral analysis method to determine the color of the sample.
- \* For no lighting sample color measurement, a defined light source illuminates the sample and the reflected surface light is spectrometrically analyzed.
- \* Via RS232 interface, connect to the computer ( PC or note book computer ), the friendly measurement from the computer monitor, easy to use.
- \* Build in Cal button. self calibration.



**LUTRON ELECTRONIC**

*The Art of Measurement*

# COLOR MEASURING INSTRUMENT

Model : RGB-1001

FEATURES	
* The RGB-1001 is a portable color measuring instrument equipped with an external sensor probe having a 45° /0° color measuring geometry.	* For no lighting sample color measurement, a defined light source illuminates the sample and the reflected surface light is spectrometrically analyzed.
* The modern, accurate microprocessor technology uses the spectral analysis method to determine the color of the sample	* For lighting sample color measurement, the light source of sample is spectrometrically analyzed directly.
* Instrument except can measure the color of no lighting sample ( textiles, paper, leathers... ), also can measure the lighting sample color ( such as CRT, LCD monitor, LED lamp, lighting lamp.....), very useful in the industrial application.	* Via RS232 interface, connect to the computer ( PC or note book computer ), the friendly measurement from the computer monitor, easy to use.
	* Build in Cal button, for no lighting sample measurement, use the included white color calibration card to make the self calibration easily.
* Excellent repeatability due to spectroscopic analysis technique used.	* Battery ( 006P DC 9V ) battery operate.

APPLICATION	
* The objective quality control of color during production.	* The interpretation and statistic evaluation of color sample measurement.
* The color measurement and recording of products supplied by supplier to check for conformity specification.	* To check the color specification CRT monitor, LCD monitor.
* The comparison of color samples against color standard.	* To make the color measurement of LED lamp, light lamp color.

SPECIFICATIONS				
Measuring geometry	45° /0° - circular illumination at 45° , measurement at 0° .		Measurement sample material type	Type 1 : No lighting sample material : Such as textiles, paper, leathers... Type 2 : Lighting sample material : Such as CRT, LCD monitor, LED lamp, lighting lamp.....
Spectral range	400 nm to 700 nm.		Buttons	Test button ( Operation button ) Cal button ( Calibration button ) Light button * No lighting sample measurement, select the sensor light to on. * Lighting sample measurement, select the sensor light to off.
Light source	Two white LED lamp.			Calibration
Color Sensors	3 color photo transistors : <i>Red photo transistor</i> <i>Green photo transistor</i> <i>Blue photo transistor</i>		Computer interface	RS 232 PC serial interface.
Measurement	<b>RGB value</b> R ( Red ) value : 0 to 255. G ( Green ) value : 0 to 255. B ( Blue ) value : 0 to 255.		Operating Temp. and Humidity	0 °C to 50 °C ( 32 °F to 122 °F ). Less than 80% RH.
	<b>HSL value</b> Hue value : 0 to 0.999. Saturation value : 0 to 0.999. Luminance value : 0 to 0.999.			
Repeatability and Accuracy	Repeatability	Accuracy	Power Supply	DC 9V battery, Alkaline type 006P, MN1604(PP3) or equivalent.
	R (Red)	<	Power Current	Approx. DC mA.
	G (Green)	<	Weight	216 g/0.48 LB.
	B (Blue)	<	Size	164 x 90 x 44 mm (6.5 x 3.5 x 1.7 inch)
	Hue	<	Accessories Included	Instruction manual..... 1 PC. Software, SW-RGB1001..... 1 PC. White color calibration card..... 1 PC. Carrying case, CA-06..... 1 PC.
	Saturation	<	Optional Accessories	RS232 to USB cable, 232USB-01
	Luminance	<		
	* Repeatability is specified under the same sample tested 10 times within two minutes. * Accuracy is specified under after the instrument is calibrated.			
Indicators	Low battery indicator Cal. indicator			

\* Appearance and specifications listed in this brochure are subject to change without notice.

0406-RGB1001