

New Product

# Thermal Imaging Infrared Thermometer

Model : TM-HT02



TM-HT02 Infrared Thermometer with Thermal Imaging for - **“What’s Hot and What’s Not”**



## Combines Digital images and Thermal Images.

### **Fast Troubleshooting.**

By seeing the heat source, it is quick to troubleshoot problems. Reads temperature directly on screen with centre spot. Centre spot switchable ON/OFF. Find hot and cold spots on screen then measure temperature. Starts up in seconds

### **Simplicity at its best.**

Point and see.  
Store and quickly download pictures from micro SD Card.  
Palette options for easy identification of problems.  
Adjustable Emissivity.

### **Storage.**

Can store up to 25,000 images.

### **Lighting.**

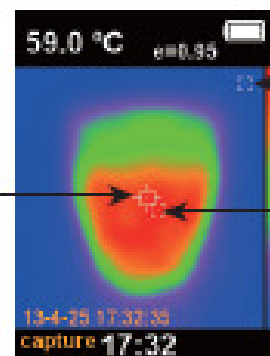
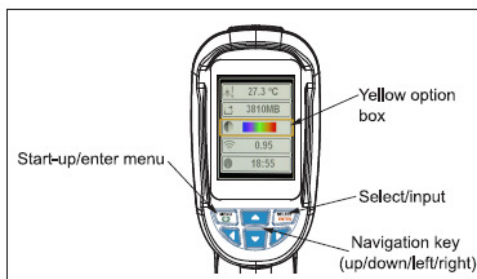
Has LED light and Background light and temperature setting.

Tripod screw-in socket.

Built-in Time Clock with date, month and year.

**Ideal for use by Electricians, Plumbers, Engineers and Maintenance Technicians.**

Icon	Description
12:12	Time setting
5000	Save image
50%	Background light setting
°C	Temperature unit setting
25°C	Background temperature setting
11088MB	Capacity of memory card
	Color palette setting
0,95	Emissivity setting



Center spot

Center spot

Hot spot

New Product

## Thermal Imaging Infrared Thermometer

Model : TM-HT02



TM-HT02 Infrared Thermometer with Thermal Imaging for - "What's Hot and What's Not"

Specifications	
Display Screen	2.4" Full-Angle High Resolution Colour Screen
Resolution of visible Image	60 x 60 (3600 Pixels)
Field Angle / Shortest focal distance	20 x 20/0.5m
Thermal Sensitivity	0.15°C
Range of Temperature Measurement	-20°C to +300°C
Accuracy	+2% or +2°C
Emissivity	Adjustable 0.1 to 1.0
Image Capturing Frequency	6Hz
Range of Wavelength	8-14um
Focal Distance	Fixed Focal Distance
Colour Palette	Iron red, rainbow, rainbow high contrast, gray scale (white glow) and gray scale (black glow)
Vision Option	25%step infrared to visual to infrared to visual image.
Memory Card	Mini SD card
File format	bmp
Power Supply	AA Battery x 4
Battery Life	6 hours
Auto Power-off Time	12 Minutes
Authentication	CE (EN61326-1:2006)
Dimensions	212mm x 95mm x 62mm
Weight	320g
Warranty Period	1 year
Operating Temperature	-5°C to '+40°C
Storage Temperature	-20°C to '+50°C
Relative Humidity	10% RH to 80% RH

