



3 Angelica Ave, Glenvista, Johannesburg, South Africa

Web: [www.instrumentsgroup.co.za](http://www.instrumentsgroup.co.za) E-mail: [sales@instrumentsgroup.co.za](mailto:sales@instrumentsgroup.co.za) Tel: 011 683 4365

## Surface Roughness Tester Leeb430



## Functions & Features

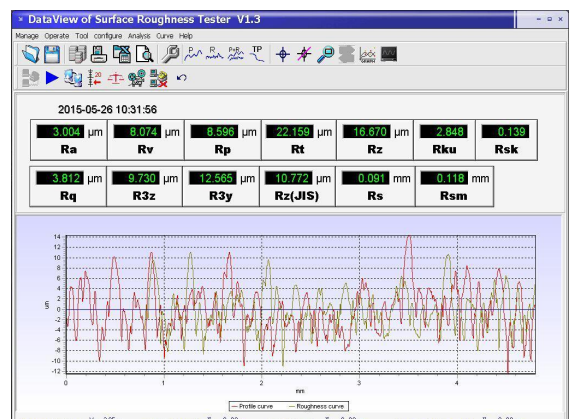
- 28 Measuring parameters;
- Adopt 320µm high accuracy inductance probe;
- Four filter methods of RC, PC-RC, GAUSS, D-P ;
- Adopt 2.7 inch 128×64 dot OLED display, without back-light and dead spot. Capable of showing all parameters, profile graph and Chinese/English menu;
- Adopt the most popular DSP chip to control and process data;
- Build-in storage can memorize 20 sets of complete measurement data;
- External SD Card can expand mass data storage;
- Build-in wireless remote control module to remote control measurement;
- Build-in Bluetooth module can be connected with the Bluetooth printer to print all the parameters and profiles;
- Build-in Micro-USB port, connecting with PC for reports and data analysis by software;
- Build-in lithium-polymer rechargeable battery and charging protection circuit;
- Mechatronics design, smaller and portable to carry;
- Automatic shut down for power saving, each operation step has a hit message;
- Full accessories, options for curve surface probe, deep groove probe, small hole probe, tiny hole probe, tooth surface probe, small pillar, height adjust platform, extension bar, lateral transfer rod etc.
- Application: for measure the surface roughness of plane, hole, slope, cone or outer cylindrical surface etc.

## Technical Parameters

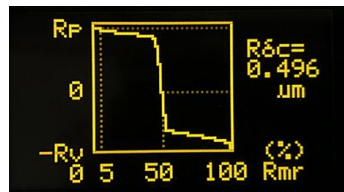
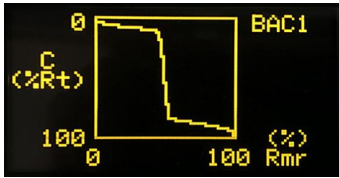
<b>Model</b>	<b>Leeb430</b>
Measurement range	Z Axis(Vertical)320 $\mu$ m(Ra=80 $\mu$ m),X Axis(Horizontal)17.5mm
Resolution (Z Axis(Vertical))	0.001 $\mu$ m/ $\pm$ 20 $\mu$ m, 0.002 $\mu$ m/ $\pm$ 40 $\mu$ m, 0.004 $\mu$ m/ $\pm$ 80 $\mu$ m, 0.008 $\mu$ m/ $\pm$ 160 $\mu$ m,
Parameters	Ra, Rq, Rz, Rt, Rp, Rv, RS, RSm, Rz(JIS), Ry(JIS), RSk, R3z, Rmax, R <sub>PC</sub> , R <sub>mr</sub> , R <sub>ku</sub> , R $\Delta$ a, R $\Delta$ q, R $\delta$ c, Ry, Rk, Rpk, Rvk, Mr1, Mr2, A1, A2, V0
Stansard	ISO, CE,FCC, ANSI, DIN, JIS
Measuring Project Graphics	Roughness Profile,Bearing ratio curve,Direct profile
Wave Filter	RC,PC-RC,Gauss,D-P
Sample Length(lr)	0.25,0.8,2.5mm
Assessment Length(ln)	L <sub>n</sub> = lr $\times$ n,n=1~5
Sensor Measurement Principle	Displacement differential inductance
Sensor Stylus	Natural Diamond,90 cone angle, 5 $\mu$ m tip radius
Sensor measured force	<4mN
Sensor guide head	Ruby, Longitudinal radius 40mm
Sensor traversing speed	Lr=0.25,Vt=0.15mm/s Lr=2.5,Vt=1mm/s
Accuracy	<= $\pm$ 10%
Repeatability	<=6%
Power Supply	Built-in Lithium ion battery, AC adapter 8.4V,800mA
Dimensions	112 $\times$ 50 $\times$ 47mm
Net weight	About 360g

●Bluetooth Control Device for Wireless Control and Print

●Software: Data Communication



## Graphic representations





## Standard Configuration

Name	Quantity	Name	Quantity
Main Body	1	SD Memory card	1
Standard sensor	1	Power adapter	1
Calibration Block	1	Straight screwdriver	1
supporting platform	1	Manual	1
Height bracket	1	Certificate	1
Sensor Protector	1	Warranty card	1
Remote controller	1	Instruments case	1

## Standard Accessories



## Optional Accessories

Item	Model No.	Pictures
Standard sensor	TS130	
Sensor for curved surface	TS110	
Sensor for tiny-hole	TS120	
Sensor for deep groove	TS131	
Sensor for small hole	TS100	
Sensor for tooth surface	TS140	
Extension Rod	50mm	
Extension Rod	127mm	
Wireless Printer(Bluetooth)		
PC Software		



3 Angelica Ave, Glenvista, Johannesburg, South Africa

Web: [www.instrumentsgroup.co.za](http://www.instrumentsgroup.co.za) E-mail: [sales@instrumentsgroup.co.za](mailto:sales@instrumentsgroup.co.za) Tel: 011 683 4365