



FLIR T420 & T440



High Performance Infrared Camera With on-board Visual Camera, Touch Screen, Wi-Fi Connectivity, & Interchangeable Lens, Plus MSX[®] Image Enhancement & FOV Match

Get maximum flexibility and efficiency out of 320 x 240 thermal imaging from our new T400 line:

Superior Thermal Imaging – Sharp thermal resolution at 76,800 pixels for solid accuracy from farther away

MSX[®] Enhancement – Multi-Spectral Dynamic Imaging adds visible spectrum definition to IR images in real time for excellent thermal detail to help you instantly recognize the problem locations

Field of View (FOV) Match – Now you have the option to automatically match the visible camera field of view to the IR FOV for better documentation

Compass – Adds camera pointing direction to every image for additional location documentation

Wi-Fi Connectivity – Send images and data to smart phones and tablets (ie. iPhone[®], iPad[®], iPod touch[®], or Android™) to share images and critical information quickly using FLIR Tools Mobile app

Accurate Temperature Measurements – Accuracy calibrated within +/- 2°C or +/- 2% of reading

High Temperature Range – measuring up to 2192°F (1200°C) targeting electrical and industrial applications (T440 model)

Scalable P-i-P and Fused Thermal Images – Blend thermal with visible light images on-screen; includes picture-in-picture window sizing

Multiple Measurements – Add up to 5 box areas and 5 moveable spots using the touchscreen to gather more detailed information

METERLINK[®] – Wirelessly transmit vital diagnostic data from clamp and moisture meters directly to the camera for annotating thermal images to further support findings.

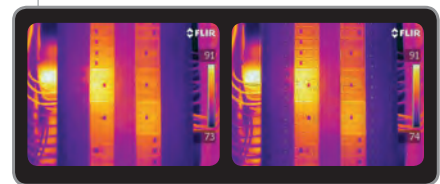
Annotation – Add voice comments via Bluetooth headset and text notes from the touchscreen keypad; New! T440 has image sketch feature to draw circles and pointers on IR/Visual stored images

InstantReport – Create PDF document directly from the camera

Includes – SD Memory Card, 100-260V AC adaptor/charger, two Li-Ion rechargeable batteries, 2-bay battery charger, power supply (with multi-plugs), FLIR Tools software, USB cable, video cable, sun shield, Bluetooth[®] headset, lens cap, neckstrap, and hard case



Wi-Fi Connectivity



Original IR Image on the Left and with MSX™ Enhancement on the Right image (available on T440 model)



Built-in 3.1MP Digital Camera, LED Lamp, Laser Pointer, Fine Focus Adjust, and Auto focus & Image Capture Button. 120° Rotating Lens with 8X Continuous Zoom



Fused thermal images insert IR image set within a temperature interval onto corresponding digital image

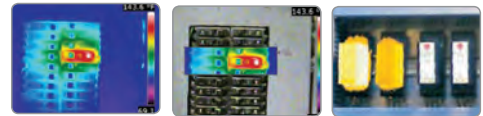


Wireless METERLINK[®] Communication via Bluetooth[®]

Applications



Utility Market — Utilities worldwide use infrared cameras to locate problems or to detect hot spots and other problems before they turn into costly failures and production downtime or dangerous electrical fires.



Electrical Inspections — With FLIR thermal imaging cameras electrical contractors can scan electrical cabinets/panels and components for a non-contact view of conditions.

Imaging Specifications

FEATURES	FLIR T420	FLIR T440
Temperature range	-4°F to 1202°F (-20°C to 650°C)	-4°F to 2192°F (-20°C to 1200°C)
Zoom	4X Continuous	8X Continuous
LCD Image Sketch	—	Draw on stored images right on touchscreen
Multi-Spectral Dynamic Imaging (MSX)	IR image with enhanced detail presentation	IR image with enhanced detail presentation
Measurement Presets	—	Presets for standard measurements
Profile Measurement Analysis	—	Shows a live graph of temperatures across a line on the image
COMMON FEATURES		
Frame Rate	60Hz	
Field of view/Minimum focus distance/FOV Match	25° x 19° / 1.31ft (0.4m) / Field of View Match where Digital Image FOV adapts to the IR lens	
Focus	Manual/Automatic	
Thermal sensitivity (N.E.T.D)	<0.045°C at 30°C	
Detector Type - Focal plane array (FPA) uncooled microbolometer	320 x 240 pixels	
Spectral range	7.5 to 13µm	
Compass	Adds camera pointing direction to each image	
Display	Built-in touch-screen 3.5" color LCD	
Image modes	Thermal/Visual/Fused thermal image/P-i-P/MSX (Resizable and movable) and Thumbnail Gallery	
Image Storage	1000 radiometric JPEG images (SD card memory)	
Image annotation	Voice (60 sec); text comments, Sketch, image markers on IR	
Periodic image storage	7 seconds to 24 hours (IR) and 14 seconds to 24 hours (IR and visual)	
Lens	25° (optional 6°, 15°, 45°, 90°, Close up 100, 50µm lenses available)	
Video Lamp	Bright LED lamp	
Laser Classification/Type	Class 2/Semiconductor AlGaInP Diode Laser: 1mW/635nm (red)	
Set-up controls	Mode selector, color palettes, configure info to be shown in image, local adaptation of units, language, date and time formats, and image gallery	
Measurement modes	5 Spotmeters, 5 Box areas, Isotherm, Auto hot/cold spot, Delta T	
Measurement correction	Reflected ambient temperature & emissivity correction	
Video Recording in Camera and Video Streaming	Non-radiometric IR-video recording (MPEG-4 to memory card), Radiometric IR-video streaming (Full dynamic to PC using USB or Wi-Fi), and Non-radiometric IR-video streaming (MPEG-4 using Wi-Fi and uncompressed colorized video using USB)	
Instant Report	Create a Thermographic Inspection report directly in the camera	
Battery Type/operating time	Li-Ion/ >4 hours, Display shows battery status	
Charging system	In camera AC adapter/2 bay charging system	
Shock / Vibration	25G, IEC 60068-2-29 / 2G, IEC 60068-2-6	
Dimensions/Weight	4.2x7.9x4.9" (106x201x125mm)/1.94lbs (0.88kg), including battery	
2-5-10 Warranty	When the camera is registered within 60 days: 2 years on Parts/Labor for the Camera; 5 years of Coverage on Batteries; 10 years of Protection on the IR Detector	

Ordering Information

62101-0101 FLIR T420 Thermal Imaging InfraRed Camera (320x240)
 62101-0301 FLIR T440 Thermal Imaging InfraRed Camera (320x240)

ACCESSORIES

1196398 Li-Ion Rechargeable Battery
 1910490 Cigarette Lighter Adapter Kit, 12VDC (1.2m cable)
 T197650 2-Bay Battery Charger including Power Supply (multi plugs)
 T911048 Camera Pouch Case
 T197717 FLIR Reporter Professional
 4114887 FLIR ThermaTrak™

CERTIFICATION TRAINING

3300149 ITC Level I Certification Training per attendee



10-Year Detector Protection
 5-Year Battery
 2-Year Parts & Labor



Test and Measurement Instruments C.C.

Tel: 011 683 4365

Fax: 011 583 4461

Email: t.m.i@iafrica.com

Website: www.instrumentsgroup.co.za

